



Northern Counties

HEALTH CARE

Compassionate Care in Our Home or Yours

May 2023

Dear Neighbor,

I am writing to seek your support for an important project taking place in downtown St. Johnsbury—the Northern Express Care – St. Johnsbury / Caplan’s Building Project.

The Caplan’s Army Store is a well-loved and iconic building in downtown St. J. Northern Counties Health Care (NCHC) is working to honor the history of the building and to ensure the Caplan’s Building serves the community for years to come. Caplan’s will be part of building healthy families and thriving communities – a fitting next step in the history of this space.

NCHC is completing a renovation to make a new space for Northern Express Care – St. Johnsbury. There is a high need for walk-in primary care services downtown. In fact, since the practice opened in November 2020, there have been more than 12,000 patient visits!

Expanding and relocating this practice to the Caplan’s Building will improve the care experience for patients and give flexibility to meet the need for walk-in care now and in the future. It will help our friends and neighbors access the right care, at the right time, at the right place and improve health equity by making it easier for all people to get the care they need.

You can help ensure access to high-quality walk-in primary care for years to come by making a donation to support this project!

Like many health care organizations, Northern Counties faces a myriad of financial pressures—changes to reimbursement policies, price increases for supplies, and workforce challenges (including investments for recruitment and retention). Those pressures and growing costs for this project (related to supplies and workforce), lead us to seek community support.

That support will help make the project a reality and help us honor the legacy of this iconic building—including a tribute to Gary Ely for his long-time commitment to the Caplan’s Army Store, the building, and the community.

Please consider making a gift today. Donations of all sizes will make a difference – it’s amazing what is possible with the power of community!

Learn more about the project and donate online by visiting www.nchcvt.org/caplans/. Donations can also be mailed using the enclosed envelope.

Sincerely,

A handwritten signature in black ink, appearing to read 'Chris Towne', is written above the name of the Chief Strategy Officer.

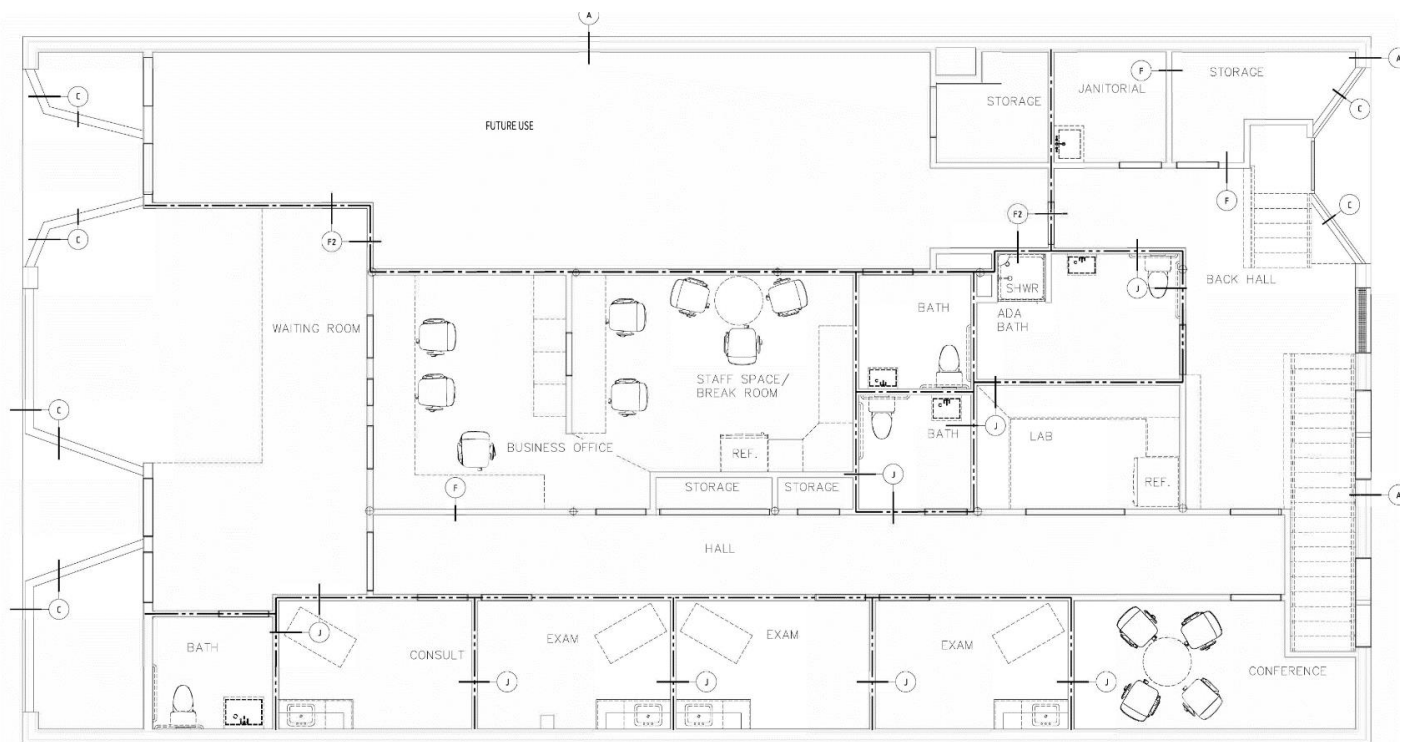
Chris Towne, Chief Strategy Officer

P.S. ALL supporters who make a donation by June 15, 2023 will be recognized at the grand opening later this summer. Donors contributing \$250 or more will be honored on a donor wall at the Caplan’s Building.

Rendering of building front



Floor Plan – Main Floor



1 PROPOSED MAIN LEVEL RCP
1/8" = 1'-0"